

DRUMS

JUST THE WAY YOU ARE

Drum notation for the song "Just the Way You Are". The notation is written on a single staff with a common time signature (C). The piece begins with a key signature change to two flats (Bb and Eb) and a 2/4 time signature. The notation includes various rhythmic patterns, rests, and dynamic markings. The piece is divided into two main sections, A and B, indicated by circled letters. Section A starts at measure 1 and ends at measure 32. Section B starts at measure 33 and ends at measure 36. The notation includes various rhythmic patterns, rests, and dynamic markings. The piece concludes with a double bar line at measure 36.

5

9

12

15

21

25

29

32

DRUMS

JUST THE WAY--2

4

36

39

43

47

50

55

59

63

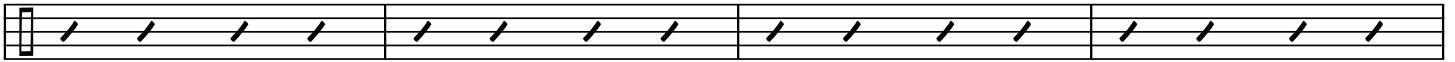
66

73

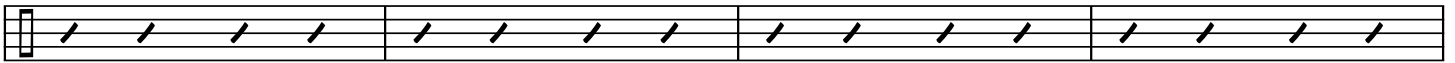
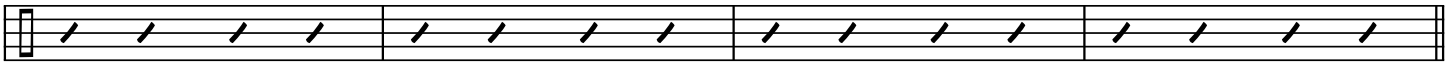
77

DRUMS

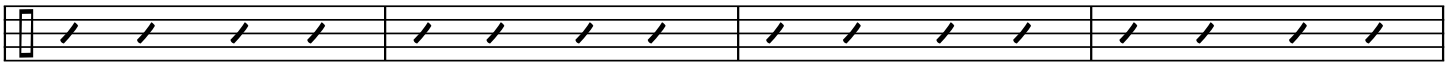
JUST THE WAY--3



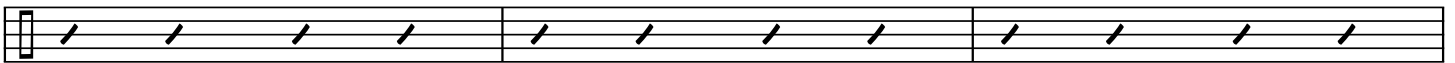
81



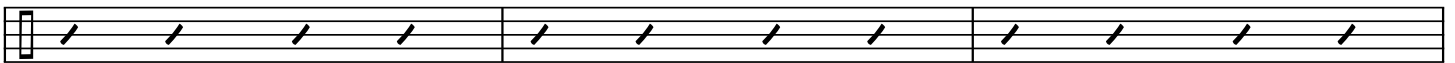
89



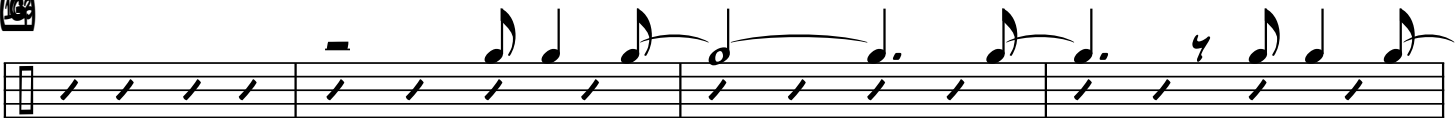
95



97



100



107



111



115



119

DRUMS

JUST THE WAY--4

(H)

3

Drum notation for measures 123-126. Measure 123: Bass drum (H), snare, and hi-hat. Measure 124: Snare, bass drum, and hi-hat. Measure 125: Snare, bass drum, and hi-hat. Measure 126: Snare, bass drum, and hi-hat.

123

Drum notation for measures 127-130. Measure 127: Snare, bass drum, and hi-hat. Measure 128: Snare, bass drum, and hi-hat. Measure 129: Snare, bass drum, and hi-hat. Measure 130: Snare, bass drum, and hi-hat.

127

Drum notation for measures 131-134. Measure 131: Snare, bass drum, and hi-hat. Measure 132: Snare, bass drum, and hi-hat. Measure 133: Snare, bass drum, and hi-hat. Measure 134: Snare, bass drum, and hi-hat.

131

Drum notation for measures 135-138. Measure 135: Snare, bass drum, and hi-hat. Measure 136: Snare, bass drum, and hi-hat. Measure 137: Snare, bass drum, and hi-hat. Measure 138: Snare, bass drum, and hi-hat.

136

Drum notation for measures 139-140. Measure 139: Snare, bass drum, and hi-hat. Measure 140: Snare, bass drum, and hi-hat.

140